

# CLEARFIRE 2000



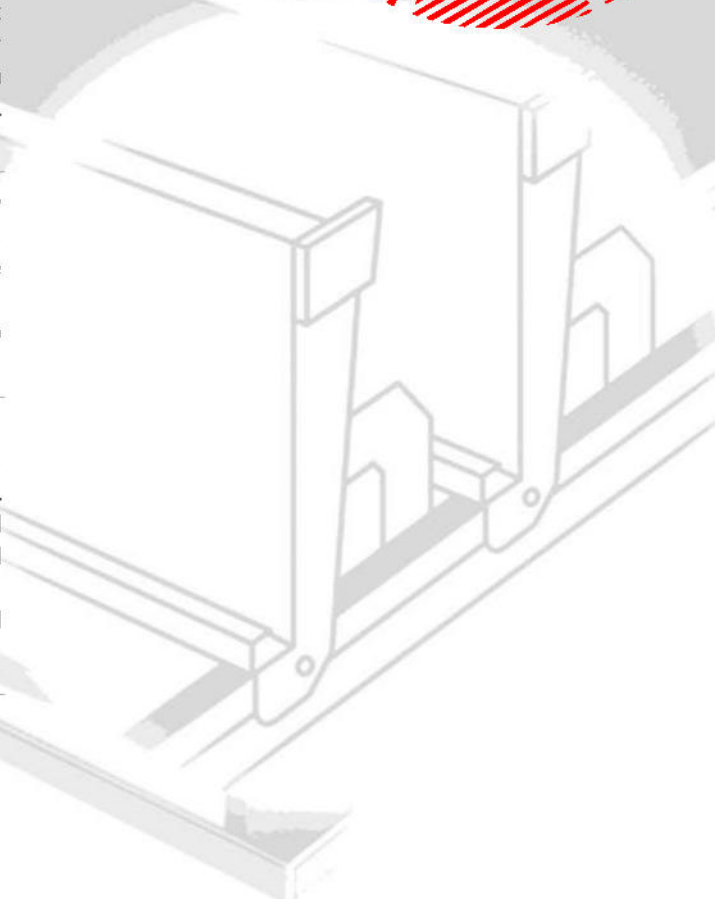
The Clearfire 2000 is a natural louvred ventilator that can extract large volumes of smoke and warm air within a short period of time. The ventilator offers a high ventilation capacity and flexibility in control options.



Aerodynamically designed to maximise efficiency and provide an aesthetically pleasing appearance, the range is available in a variety of options. The units are suitable for a wide variety of applications, ranging from industrial/commercial buildings to shopping centres and atria.

## **MATERIAL**

Corrosion resistant mill finish hardened aluminium, with corrosion resistant bearings. The longitudinal sealing is fitted with weatherproof sealing tape and energy strips. This sealing minimises draughts and heat loss when the blades are in the closed position. The Clearfire 2000 is also available with insulated blades or translucent polycarbonate blades.

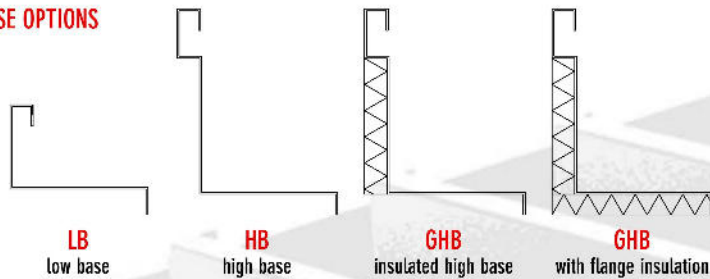


# CLEARFIRE 2000

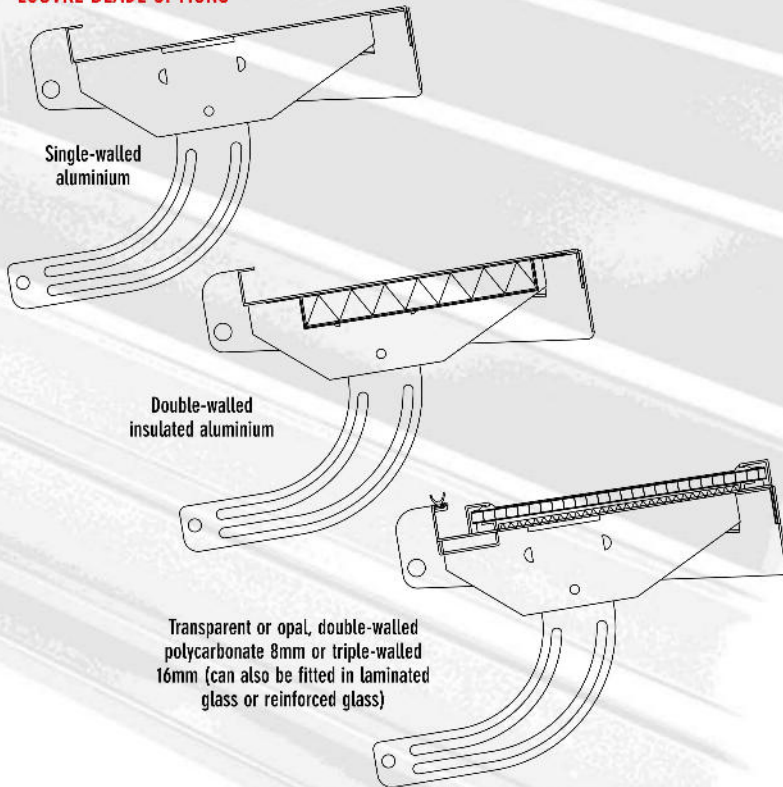
## OPERATION

- P** single-acting compressed air operation
  - P2** double-acting compressed air operation
  - M** motor operation
  - K** cable operation
- Suffix: **B** fire function    **FS** failsafe

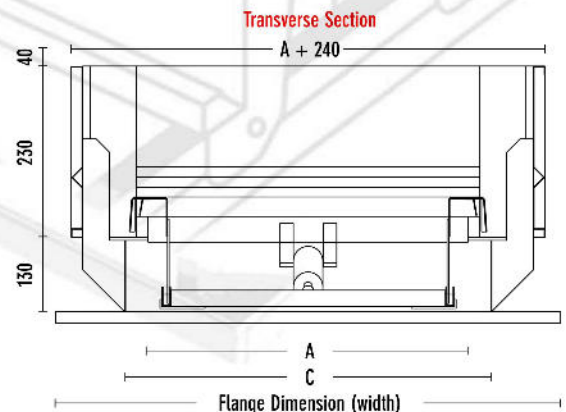
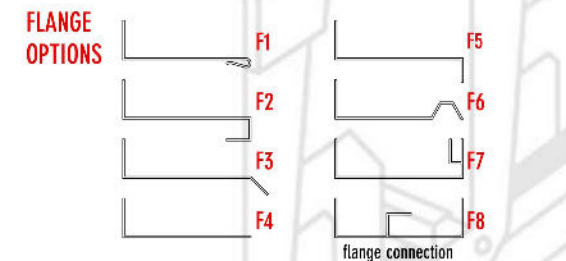
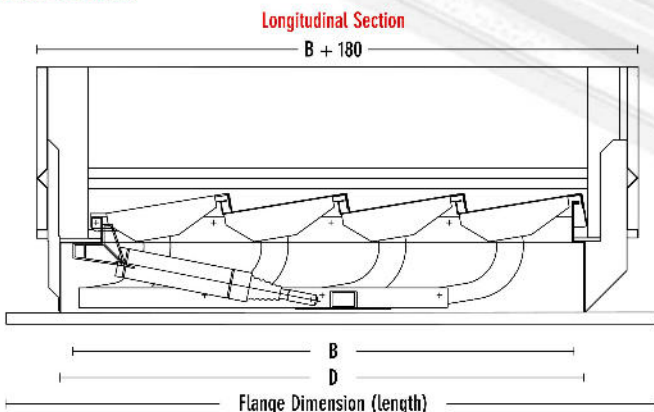
## BASE OPTIONS



## LOUVRE BLADE OPTIONS



## CROSS SECTIONS



Unit	Throat Size (mm)				Throat Area (m <sup>2</sup> )		Aerodynamic Free Area		Weight (kg)
	LB/GHB base	B	HB base	D	LB/GHB base	HB base	LB/GHB base	HB base	
60-3	600	720	640	760	0.43	0.49	0.26	0.29	19
60-4	600	940	640	980	0.56	0.63	0.34	0.38	23
60-5	600	1160	640	1200	0.70	0.77	0.42	0.46	27
60-6	600	1380	640	1420	0.83	0.91	0.50	0.55	30
60-7	600	1600	640	1640	0.96	1.05	0.58	0.63	33
60-8	600	1820	640	1860	1.09	1.19	0.66	0.71	36
60-9	600	2040	640	2080	1.22	1.33	0.73	0.8	39
60-10	600	2260	640	2300	1.36	1.47	0.81	0.9	42
60-11	600	2480	640	2520	1.49	1.61	0.89	0.98	45
60-12	600	2700	640	2740	1.62	1.75	0.97	1.05	48
60-13	600	2920	640	2960	1.75	1.89	1.05	1.14	51
60-14	600	3140	640	3180	1.88	2.04	1.15	1.24	54
60-15	600	3360	640	3400	2.02	2.18	1.23	1.33	57
60-16	600	3580	640	3620	2.15	2.32	1.31	1.42	60
60-17	600	3800	640	3840	2.28	2.46	1.39	1.5	63
120-3	1200	720	1240	760	0.86	0.94	0.52	0.57	28
120-4	1200	940	1240	980	1.13	1.22	0.68	0.73	33
120-5	1200	1160	1240	1200	1.39	1.49	0.84	0.89	38
120-6	1200	1380	1240	1420	1.66	1.76	0.99	1.06	42
120-7	1200	1600	1240	1640	1.92	2.03	1.15	1.22	47
120-8	1200	1820	1240	1860	2.18	2.31	1.31	1.38	51
120-9	1200	2040	1240	2080	2.45	2.58	1.47	1.57	56
120-10	1200	2260	1240	2300	2.71	2.85	1.65	1.74	60
120-11	1200	2480	1240	2520	2.98	3.12	1.82	1.91	65
120-12	1200	2700	1240	2740	3.24	3.40	1.94	2.04	69
120-13	1200	2920	1240	2960	3.50	3.67	2.10	2.2	74
120-14	1200	3140	1240	3180	3.77	3.94	2.30	2.4	78
120-15	1200	3360	1240	3400	4.03	4.22	2.46	2.57	82
120-16	1200	3580	1240	3620	4.30	4.49	2.62	2.74	86
120-17	1200	3800	1240	3840	4.56	4.76	2.78	2.9	90
180-3	1800	720	1840	760	1.30	1.40	0.78	0.84	36
180-4	1800	940	1840	980	1.69	1.80	1.02	1.08	42
180-5	1800	1160	1840	1200	2.09	2.21	1.25	1.32	48
180-6	1800	1380	1840	1420	2.48	2.61	1.49	1.57	54
180-7	1800	1600	1840	1640	2.88	3.02	1.73	1.84	60
180-8	1800	1820	1840	1860	3.28	3.42	1.97	2.09	66
180-9	1800	2040	1840	2080	3.67	3.83	2.24	2.33	72
180-10	1800	2260	1840	2300	4.07	4.23	2.48	2.58	78
180-11	1800	2480	1840	2520	4.46	4.64	2.72	2.83	84
180-12	1800	2700	1840	2740	4.86	5.04	2.92	3.02	90
180-13	1800	2920	1840	2960	5.26	5.45	3.15	3.27	96
180-14	1800	3140	1840	3180	5.65	5.85	3.50	3.63	102
180-15	1800	3360	1840	3400	6.05	6.26	3.75	3.88	108
180-16	1800	3580	1840	3620	6.44	6.66	3.99	4.13	114
180-17	1800	3800	1840	3840	6.84	7.07	4.24	4.38	120
240-3	2400	720	2440	760	1.73	1.85	1.04	1.11	45
240-4	2400	940	2440	980	2.26	2.39	1.35	1.43	52
240-5	2400	1160	2440	1200	2.78	2.93	1.67	1.76	59
240-6	2400	1380	2440	1420	3.31	3.46	1.99	2.08	66
240-7	2400	1600	2440	1640	3.84	4.00	2.34	2.44	73
240-8	2400	1820	2440	1860	4.37	4.54	2.66	2.77	80
240-9	2400	2040	2440	2080	4.90	5.08	2.99	3.1	87
240-10	2400	2260	2440	2300	5.42	5.61	3.31	3.42	94
240-11	2400	2480	2440	2520	5.95	6.15	3.63	3.75	101
240-12	2400	2700	2440	2740	6.48	6.69	3.89	4.01	108
240-13	2400	2920	2440	2960	7.01	7.22	4.20	4.33	115
240-14	2400	3140	2440	3180	7.54	7.75	4.67	4.81	122
240-15	2400	3360	2440	3400	8.06	8.30	5.00	5.15	129
240-16	2400	3580	2440	3620	8.59	8.83	5.33	5.47	136
240-17	2400	3800	2440	3840	9.12	9.37	5.65	5.81	143

Due to a policy of continuous improvement, alterations in the specification may be made at any time without notice. The company accepts no responsibility for any discrepancies which may occur between the specification of its equipment and the descriptions contained in its publications.