



FIXING INSTRUCTIONS FOR MACKRIDGE VENTILATORS

McKenzie-Martin Ltd.

ETON HILL WORKS, ETON HILL ROAD, RADCLIFFE, MANCHESTER M26 2US. TEL: 0161-723 2234 FAX: 0161-725 9531

GENERAL

- a Care must be taken in storage; handling; lifting and fixing of the ventilators to avoid damage, especially to the base flanges.
- b Each ventilator is supplied with 6 No. 38mm wide washer plates (4 No. with ventilators under 1524mm in length) and these should be spaced as evenly as possible along the length of the base flanges as indicated in sketch 'A'. The washer plates are supplied with 2 No. 9mm diameter holes spaced to suit the corrugation crowns of the roof sheeting.
- c We recommend the use of M8 diameter hookbolts but other fixings may be used provided they are of comparable strength.
- d It is essential to insert suitable waterproofing washers above and below the washer plate at each fixing bolt as shown in sketch 'A'.
- e All holes made in the ventilator base flanges must be drilled – not punched.
- f It is essential that the base flanges are seated on suitable corrugation filler pieces positioned below the fixing bolts as shown in sketch 'A'. These should be bedded on to the roof sheeting using a suitable grade of sealing compound–this is particularly important on exposed sites and shallow pitched roofs.

When the ventilators are mounted on Roof sheeting which incorporates an insulating lining it is recommended that top, bottom, and side closure flashings are fitted to seal off the exposed Roof cavity. These can be supplied on Request.

NOTE The purchaser is responsible for the supply of all fixing bolts, nuts, washers, corrugation filler pieces and sealing compound, of adequate size and quality to ensure satisfactory fixing and watertight sealing.

WEATHERING AT RIDGE JUNCTIONS

- 1 Plain Wing Ridge Capping – should be lapped fully over the ventilator end flanges as shown in sketch 'B'.
- 2 A C Close fitting Ridge Capping – should abutt the end flange and a lead saddle flashing fitted as shown in sketch 'C'.
- 3 A C Cranked Crown Ridges – should be laid to the end of the ventilator throat with the end flange lapping over the corrugations as shown in sketch 'D'.

CONTINUOUS RIDGE VENTILATOR

For jointing details for Mackridge Continuous Ridge Ventilator please refer to sketch 'E'.

CONTROLS

For manual control installation assembly please refer to sketches 'F2' and 'F3' as appropriate.

SUGGESTED METHOD OF FIXING IS AS FOLLOWS:-

- 1 Place ventilator in required position on ridge.
- 2 Evenly space washer plates as sketch 'A'.
- 3 Mark off ventilator base flanges through washer plate holes ensuring that the fixing positions align correctly to the centre of the crown of the corrugations of the roof sheeting and also to the leading edge of the ridge purlins.
- 4 Remove washer plates and 'pop mark' previously scribed fixing positions to base flange using centre punch.
- 5 Lift ventilator and from underside drill base flanges to 'back marked' fixing hole positions as described in item 4.
- 6 Reposition ventilator on ridge and mark off roof sheeting through previously drilled holes in the base flanges.
- 7 Remove ventilator from ridge and drill roof sheeting as marked.
- 8 Replace ventilator in ridge position and inset fixings etc., in conjunction with accessories and details shown in sketch 'A'.

IMPORTANT PLEASE NOTE BEFORE FIXING

- 1 When additional Gable End extension base flange plates are supplied these are temporarily bolted to the ventilator base flange to avoid damage during transit. It is essential that they are reversed and rebolted prior to fixing.
- 2 Similarly in controllable vents, the control arm is temporarily secured within the ventilator throat during transit and must be repositioned prior to fitting the ventilator: see sketches MM 'F2' and 'F3'.

Other fixing methods contractors may adopt must be equivalent.

McKENZIE-MARTIN LTD. CANNOT BE HELD RESPONSIBLE FOR FAULTY INSTALLATION OR DAMAGE CAUSED THEREBY.
THESE FIXING INSTRUCTIONS DO NOT FORM PART OF THE COMPANY'S CONDITIONS OF SALE

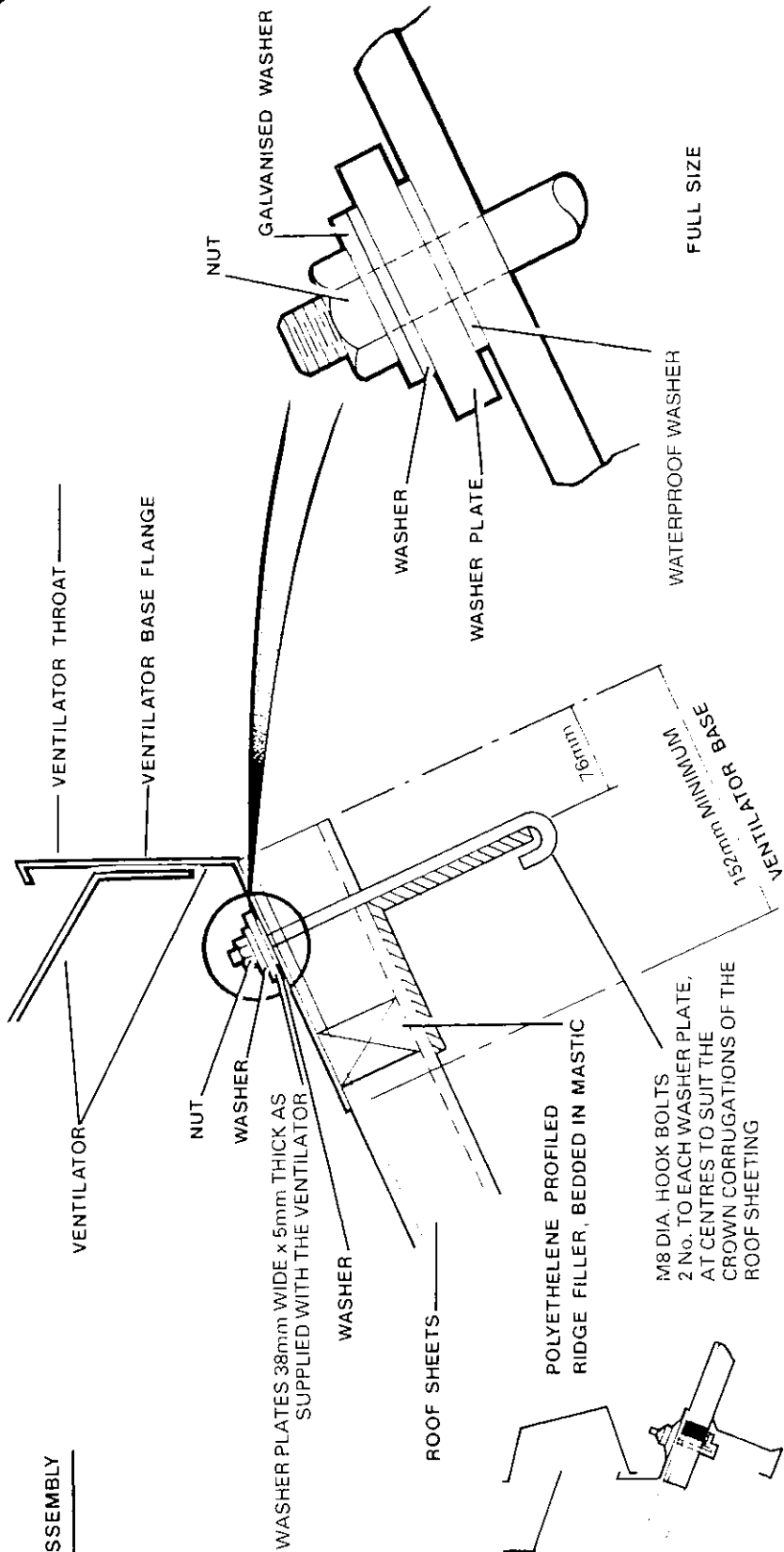
McKENZIE-MARTIN LIMITED
ETON HILL WORKS
ETON HILL ROAD
RADCLIFFE
MANCHESTER M26 2US
Telephone: 0161-723 2234
Fax: 0161-725 9531

THESE INSTRUCTIONS SUPERSEDE ALL PREVIOUS ISSUES MM 7/98

Due to the Company's policy of manufacturing to customers specific requirements the Company accepts no responsibility for any discrepancies which may occur between the equipment supplied and the descriptions in this publication.

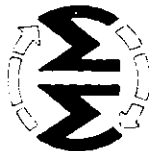
Whilst the Company has made every effort to ensure that the information contained in these fixing instructions is accurate, it cannot be held responsible for any errors or omissions arising.

WASHER PLATE FIXING ASSEMBLY



TYPICAL RIDGE VENTILATOR DETAIL

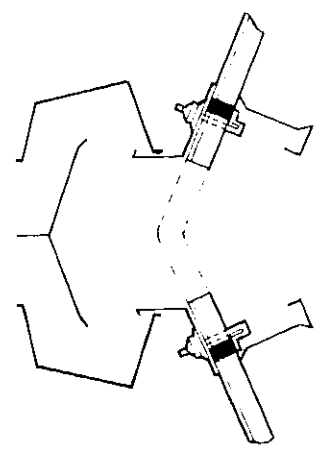
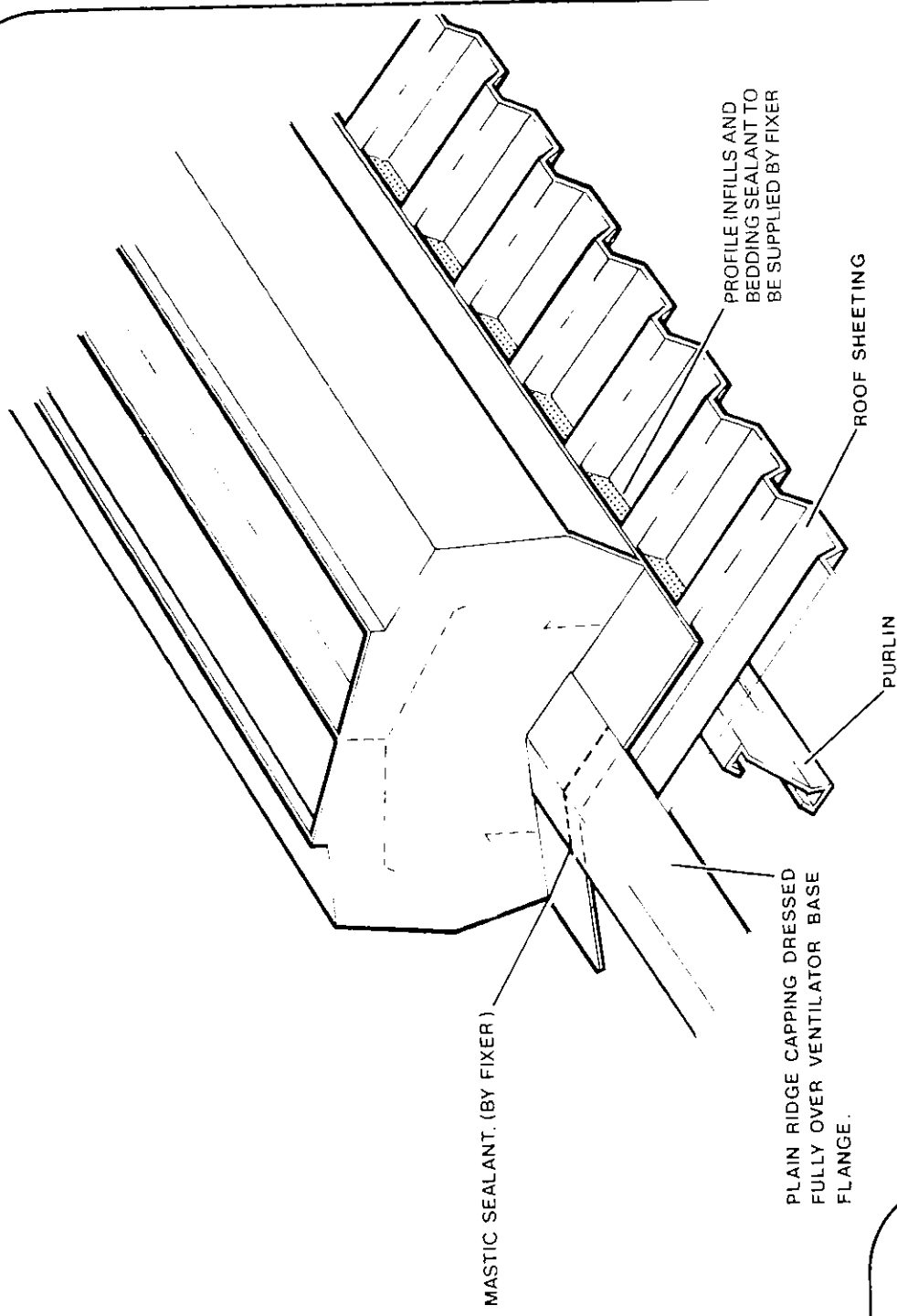
DRAWING M M/A



Mckenzie - Martin Ltd.

ETON HILL WORKS, ETON HILL ROAD, RADCLIFFE
MANCHESTER M26 2US TEL: 0161-723 2234

FAX: 0161-725 9531



MACKRIDGE - TYPICAL RIDGE MOUNTING DETAIL TO PLAIN WING PREFORMED RIDGE CAPPING

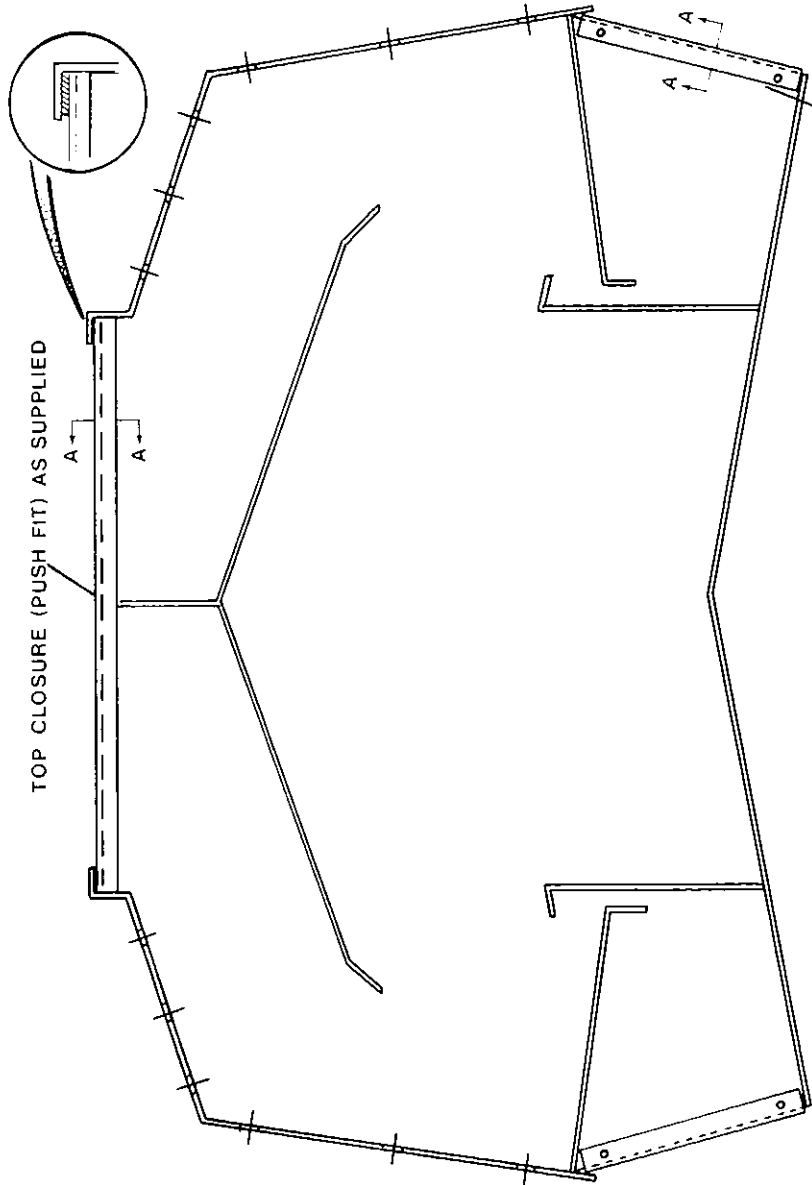
DRAWING M M / B



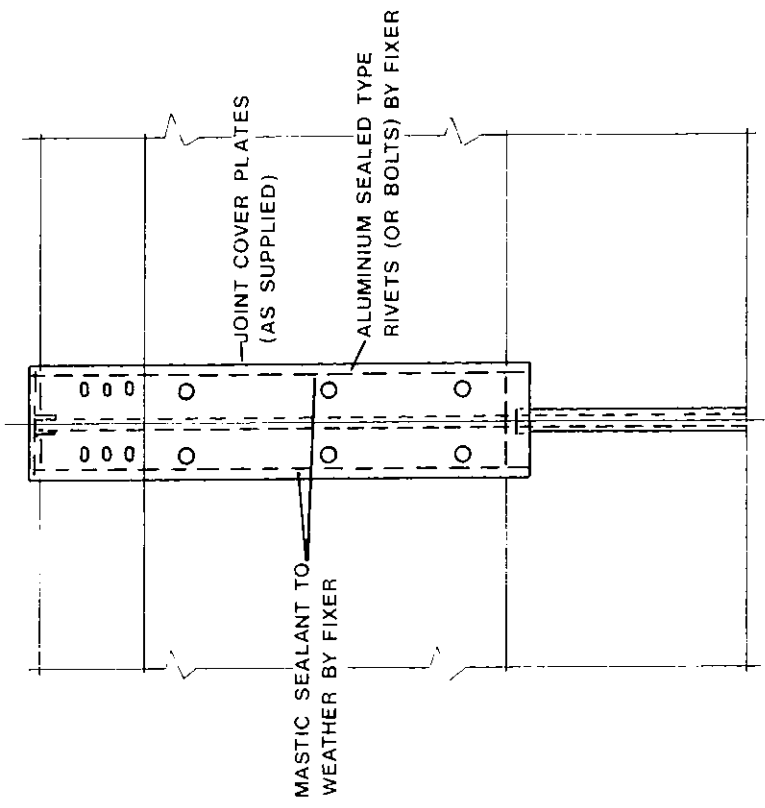
Mckenzie - Martin Ltd

ETON HILL WORKS, ETON HILL ROAD, RADCLIFFE
 MANCHESTER M26 2US TEL: 0161-723 2234
 FAX: 0161-725 9531

TOP CLOSURE (PUSH FIT) AS SUPPLIED



BOTTOM CLOSURE (AS SUPPLIED)
FIXED WITH M5 BOLTS & NUTS (BY FIXER)

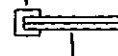


JOINT COVER PLATES
(AS SUPPLIED)

MASTIC SEALANT TO
WEATHER BY FIXER

ALUMINIUM SEALED TYPE
RIVETS (OR BOLTS) BY FIXER

TOP OR BOTTOM CLOSURE (AS SUPPLIED)



VENTILATOR END PLATES

SECTION A-A

DRAWING M M / E



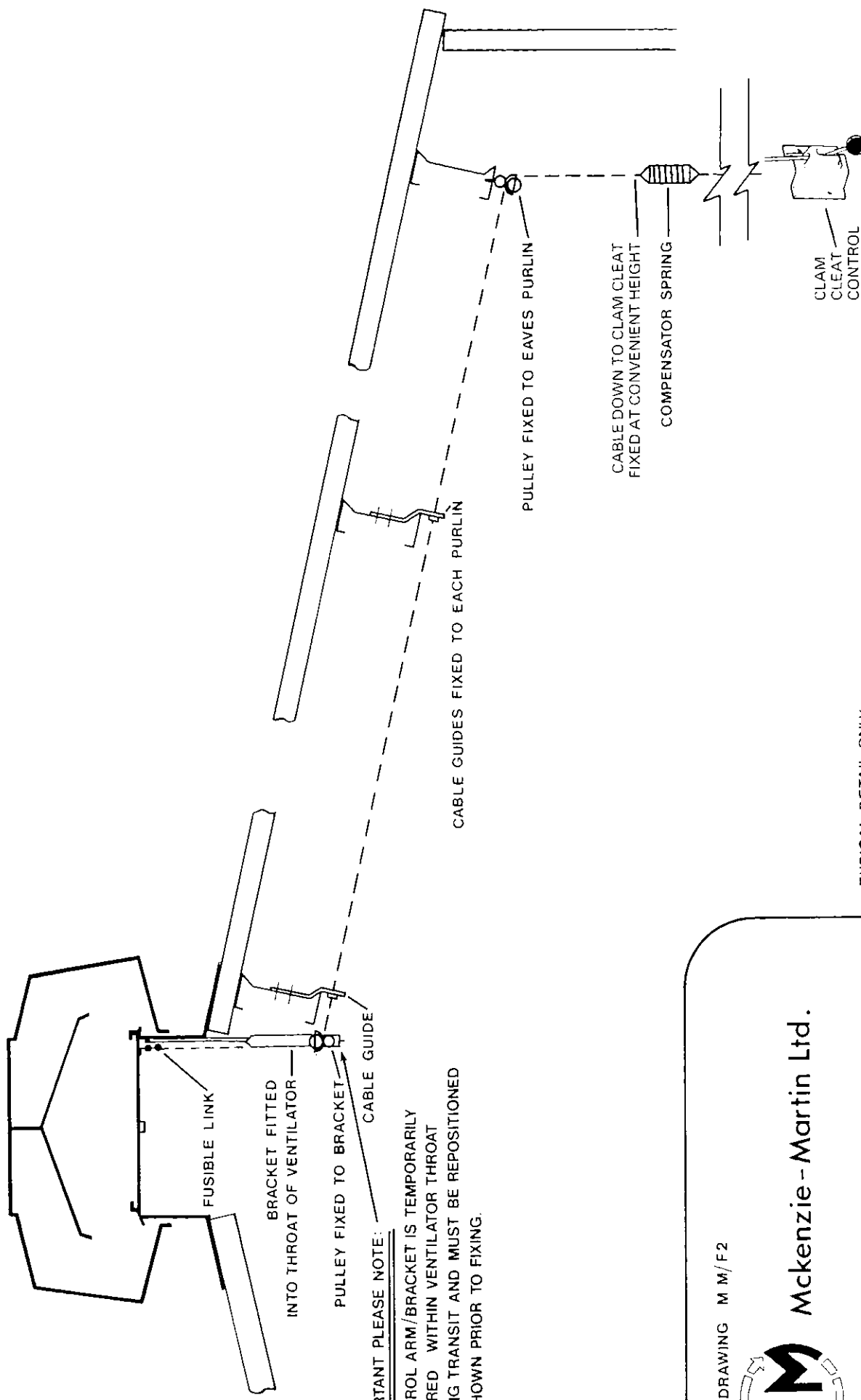
Mckenzie - Martin Ltd.

ETON HILL WORKS, ETON HILL ROAD, RADCLIFFE

MANCHESTER M26 2US TEL: 0161-723 2234

FAX: 0161-725 9531

JOINT DETAIL FOR MCKENZIE - MARTIN 'MACKRIDGE' CONTINUOUS RIDGE VENTILATOR

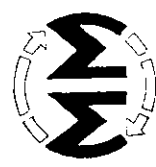


IMPORTANT PLEASE NOTE:
 CONTROL ARM/BRACKET IS TEMPORARILY
 SECURED WITHIN VENTILATOR THROAT
 DURING TRANSIT AND MUST BE REPOSITIONED
 AS SHOWN PRIOR TO FIXING.

TYPICAL DETAIL ONLY

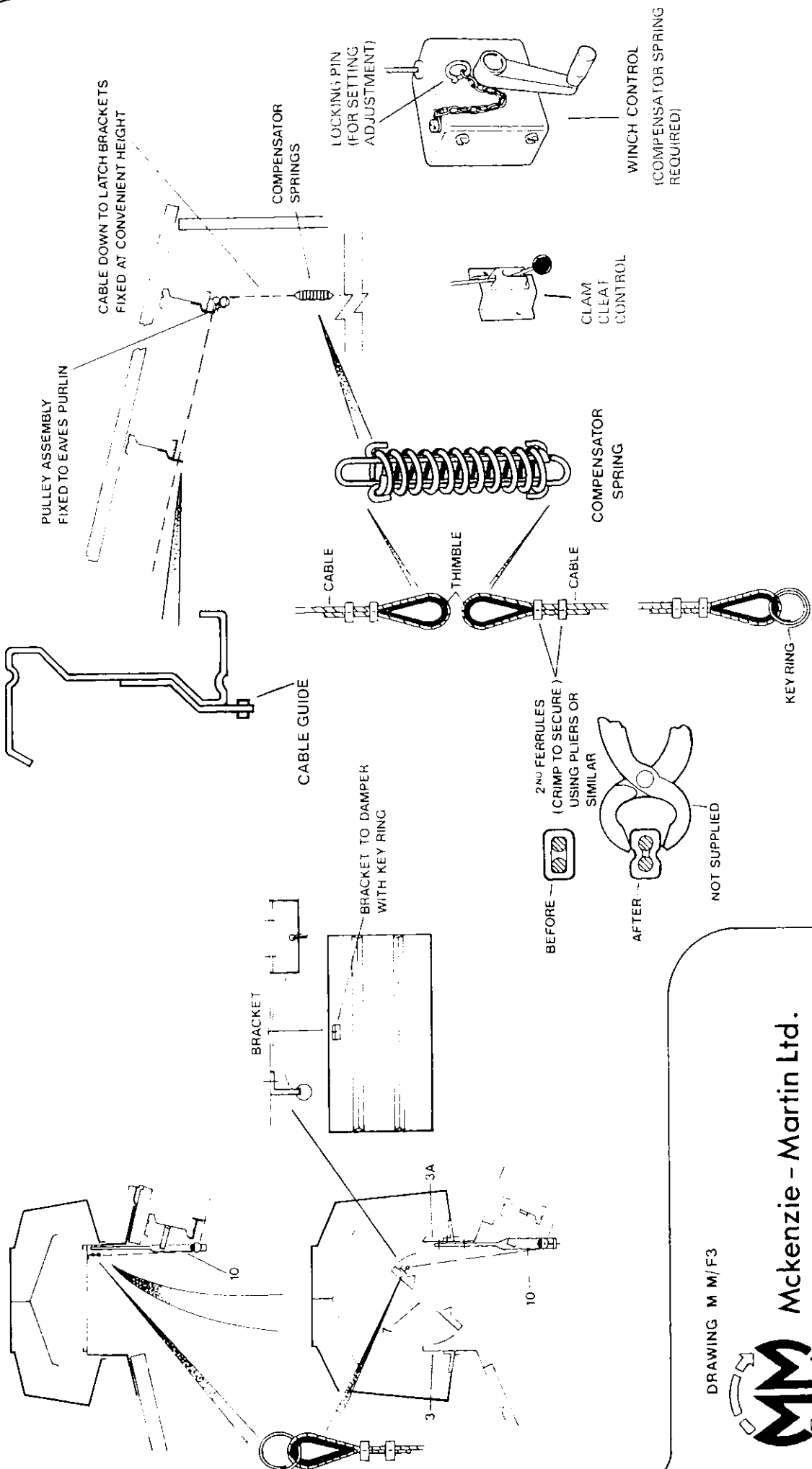
CONTROL TO DAMPER FOR MCKENZIE - MARTIN MACKRIDGE VENTILATOR (CABLE OPERATED)

DRAWING M M/F2



McKenzie - Martin Ltd.

ETON HILL WORKS, ETON HILL ROAD, RADCLIFFE
 MANCHESTER M26 2US TEL: 0161-723 2234
 FAX: 0161-725 9531



TYPICAL DETAIL ONLY CONTROLS TO DAMPER FOR MCKENZIE - MARTIN MACKRIDGE VENTILATORS. (CABLE OPERATED)

DRAWING M M/F3



Mckenzie - Martin Ltd.

ETON HILL WORKS, ETON HILL ROAD, RADCLIFFE
 MANCHESTER M26 2US TEL: 0161-723 2234
 FAX: 0161-725 9531



Details required for manufacture

DRAWING REF: DM/M

of

MACKRIDGE & MULTI-FIRE VENTILATORS

McKenzie-Martin Ltd.

ETON HILL WORKS, ETON HILL ROAD, RADCLIFFE, MANCHESTER M26 9US. TEL: 0161-723 2234 FAX: 0161-725 9531

CLIENT

CONTRACT

UNIT TYPE

TYPE & SIZE OF PURLIN (INCLUDING MANUFACTURER)

TYPE OF SHEETING (MANUFACTURER AND MATERIAL)

ROOF PITCH IN 0°

OVERALL DEPTH OF SHEETING (INCLUDING LINING)

DISTANCE FROM S.O.P. TO VERTICAL LEG OF PURLIN (X)

IF UNIT IS OPERABLE PLEASE INDICATE:-

HEIGHT TO EAVES

DISTANCE DOWN ROOF SLOPE

IF ROOF CAVITY CLOSURE FLASHINGS ARE REQUIRED, PLEASE CONSULT THIS OFFICE

Below is a sketch illustrating a typical ridge detail. If the information requested cannot be transposed using the detail below, clients are requested to sketch the relevant information overleaf.

Units manufactured for fire release only, incorporate a release and reset testing facility. As this facility may be mounted on the internal or external surface of the unit, please indicate which alternative is applicable?

