



FIXING INSTRUCTIONS FOR KENSTACK VENTILATORS

McKenzie-Martin Ltd.

ETON HILL WORKS, ETON HILL ROAD, RADCLIFFE, MANCHESTER M26 9US. TEL: 0161-723 2234 FAX: 0161-725 9531

GENERAL

- a Care must be taken in storage; handling; lifting and fixing of the ventilators to avoid damage, especially to the base flanges.
- b We recommend the use of 8 mm Diameter hookbolts for securing the end flanges of the units to the roof purlins. Alternatively other fixings may be used providing they are of comparable quality and strength.
- c Similarly, we would recommend that the side flanges of the units should be stitched/secured to the roof sheeting using 'Raylap or Rawlnut' fixings at maximum 300 mm centres. Again alternative fixings may be used in lieu providing they are of comparable quality and strength.
- d All holes in the ventilator base flanges must be drilled and not punched.
- e It is essential that the end base flanges are seated on suitable corrugation filler pieces as indicated on the enclosed sketches. These filler pieces should be bedded on to the roof sheeting using a suitable grade of sealing compound – This is particularly important on exposed sites and shallow pitched roofs.
- f When the ventilators are mounted on Roof sheeting which incorporates an insulating lining it is recommended that top, bottom, and side closure flashings are fitted to seal off the exposed Roof cavity. These can be supplied on Request.

NOTE

The purchaser is responsible for the supply of all fixing bolts, nuts, washers, corrugation filler pieces and sealing compound, of adequate size and quality to ensure satisfactory fixing and water tight sealing.

METHODS OF MOUNTING AT RIDGE POSITIONS

- 1 Plain wing Ridge capping – see sketch MM/H
- 2 A/C Close fitting Ridge capping – see sketch MM/J
- 3 A/C Cranked crown Ridges – see sketch MM/K

METHOD OF MOUNTING INTO ROOF GLAZING – see sketch MM/G

METHOD OF MOUNTING ONTO FLAT ROOFS – see sketch MM/L

CONTROLS For manual control installation assembly please refer to sketches MM/M1 and MM/M2

Other fixing methods contractors may adopt must be equivalent.

IMPORTANT PLEASE NOTE BEFORE FIXING

- 1 When additional Gable End extension base flange plates are supplied these are temporarily bolted to the ventilator base flange to avoid damage during transit. It is essential that they are reversed and rebolted prior to fixing.
- 2 Similarly in controllable vents, the control arm is temporarily secured within the ventilator throat during transit and must be repositioned prior to fitting the ventilator: see sketches MM/M1 and MM/M2

McKENZIE-MARTIN LTD., CANNOT BE HELD RESPONSIBLE FOR FAULTY INSTALLATIONS OR DAMAGE CAUSED THEREBY.

THESE FIXING INSTRUCTIONS DO NOT FORM PART OF THE COMPANY'S CONDITIONS OF SALE.

McKENZIE-MARTIN LIMITED

ETON HILL WORKS

ETON HILL ROAD

RADCLIFFE

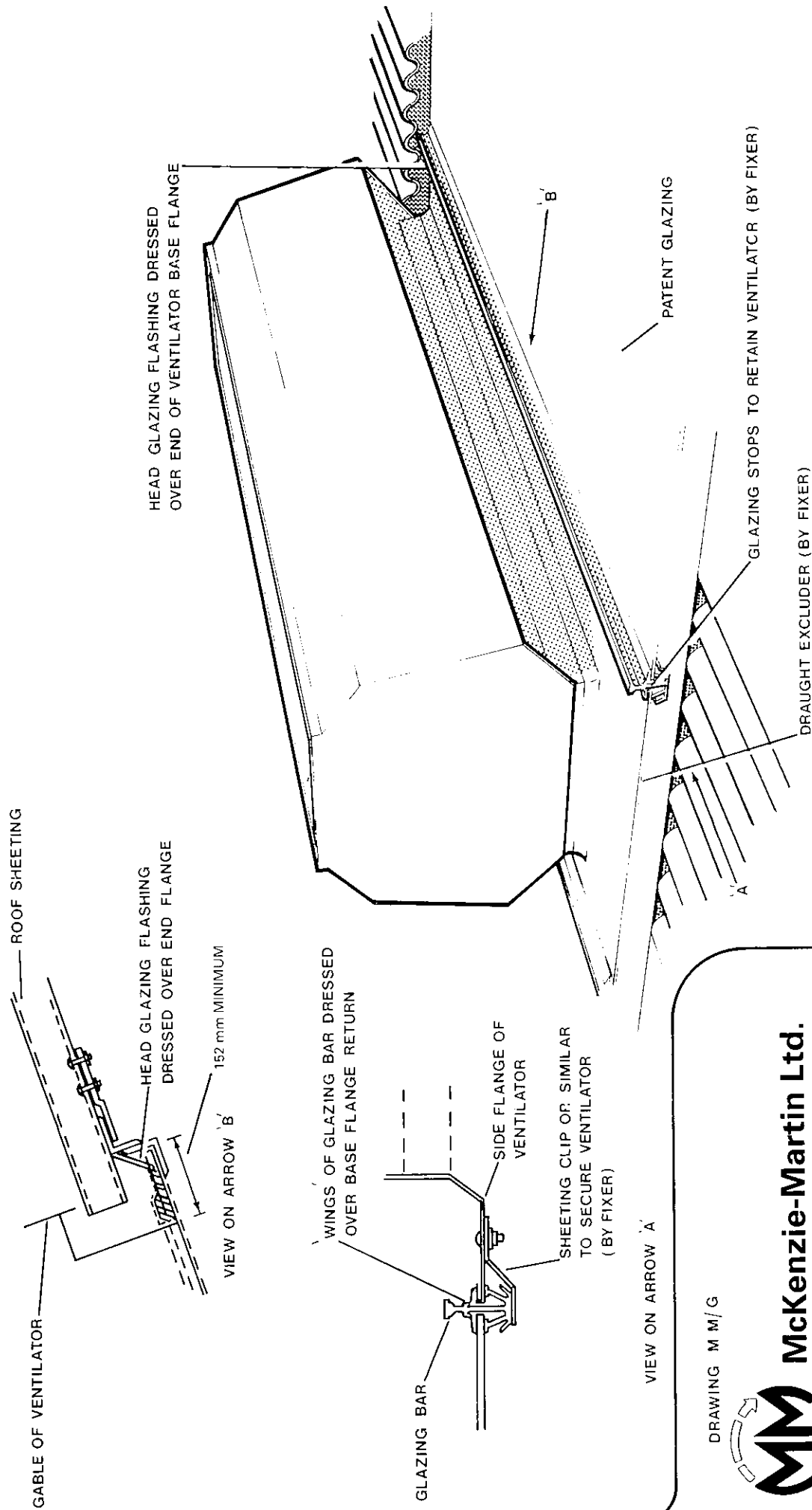
MANCHESTER M26 9US

Telephone 0161-723 2234 Fax: 0161-725 9531

THESE INSTRUCTIONS SUPERSEDE ALL PREVIOUS ISSUES MM 2/97

Due to the Company's policy of manufacturing to customers specific requirements the Company accepts no responsibility for any discrepancies which may occur between the equipment supplied and the descriptions in this publication.

Whilst the Company has made every effort to ensure that the information contained in these fixing instructions is accurate it cannot be held responsible for any errors or omissions arising.



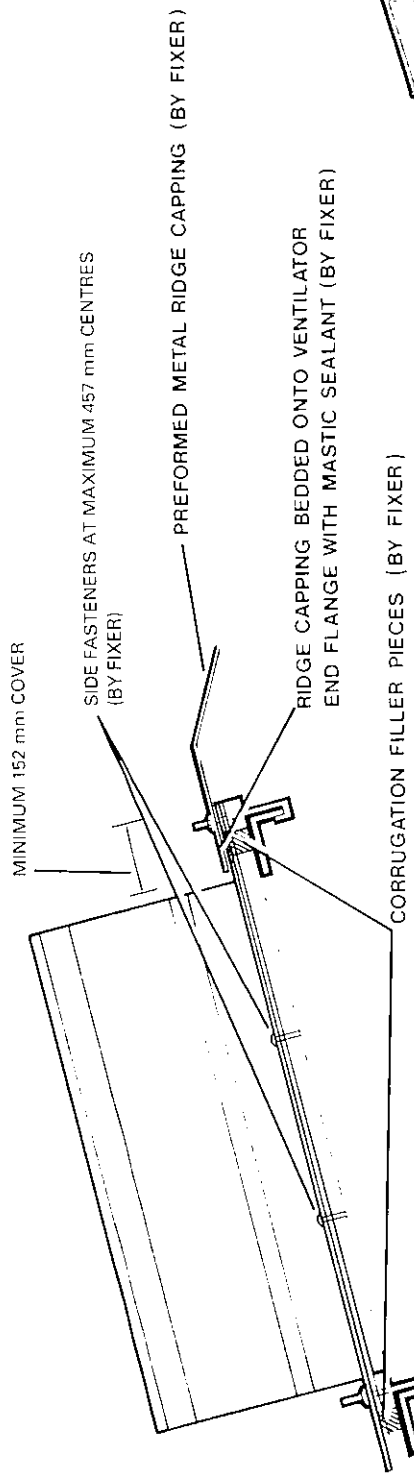
KENSTACK - TYPICAL GLAZING MOUNTING DETAIL

DRAWING M M/G

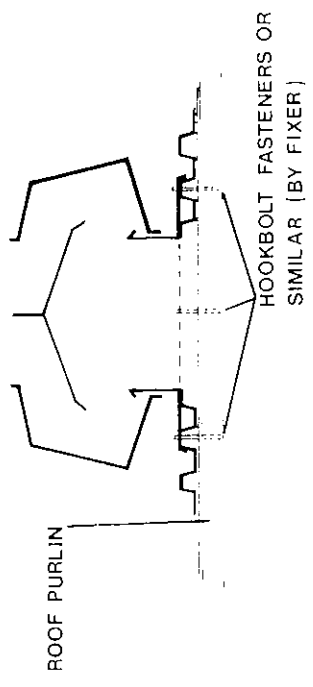


McKenzie-Martin Ltd.

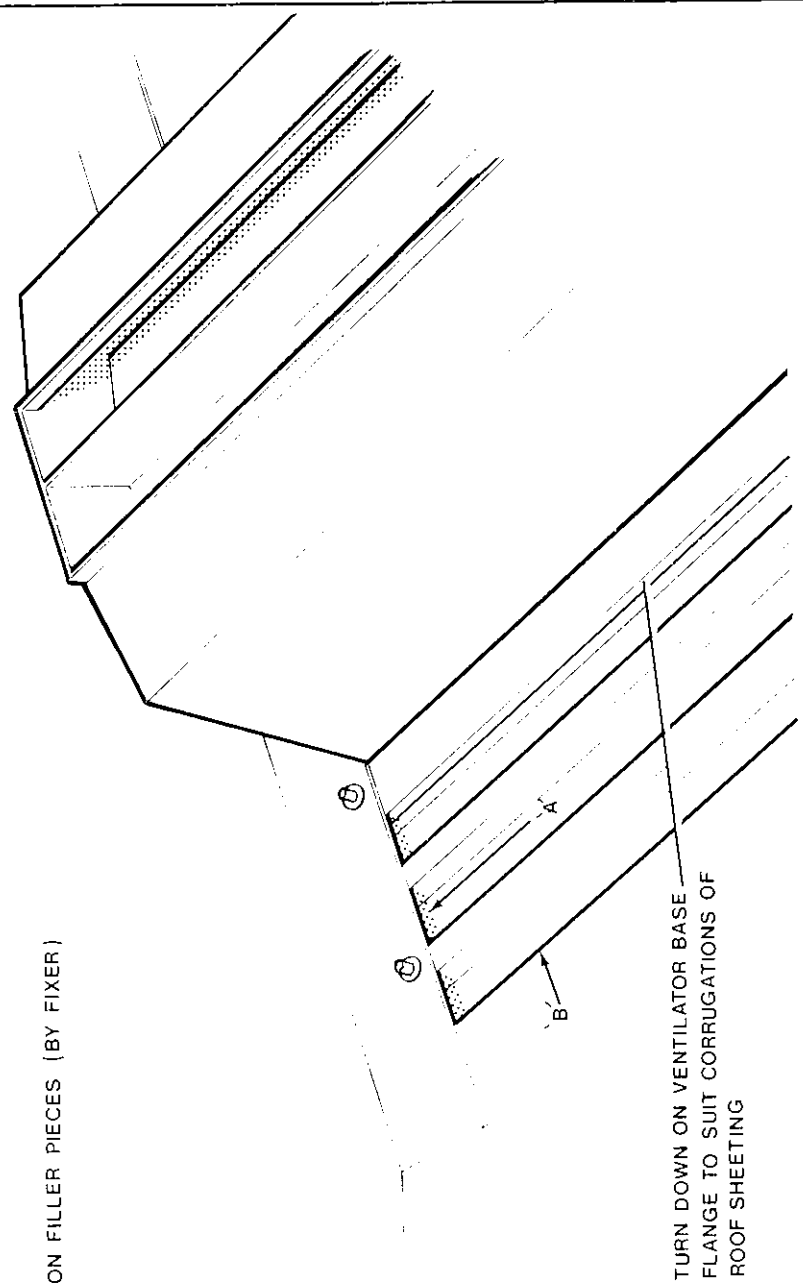
ETON HILL WORKS, ETON HILL ROAD, RADCLIFFE
 MANCHESTER M26 9US. TEL: 0161-723 2234
 FAX: 0161-725 9531



VIEW ON ARROW 'B'



VIEW ON ARROW 'A'



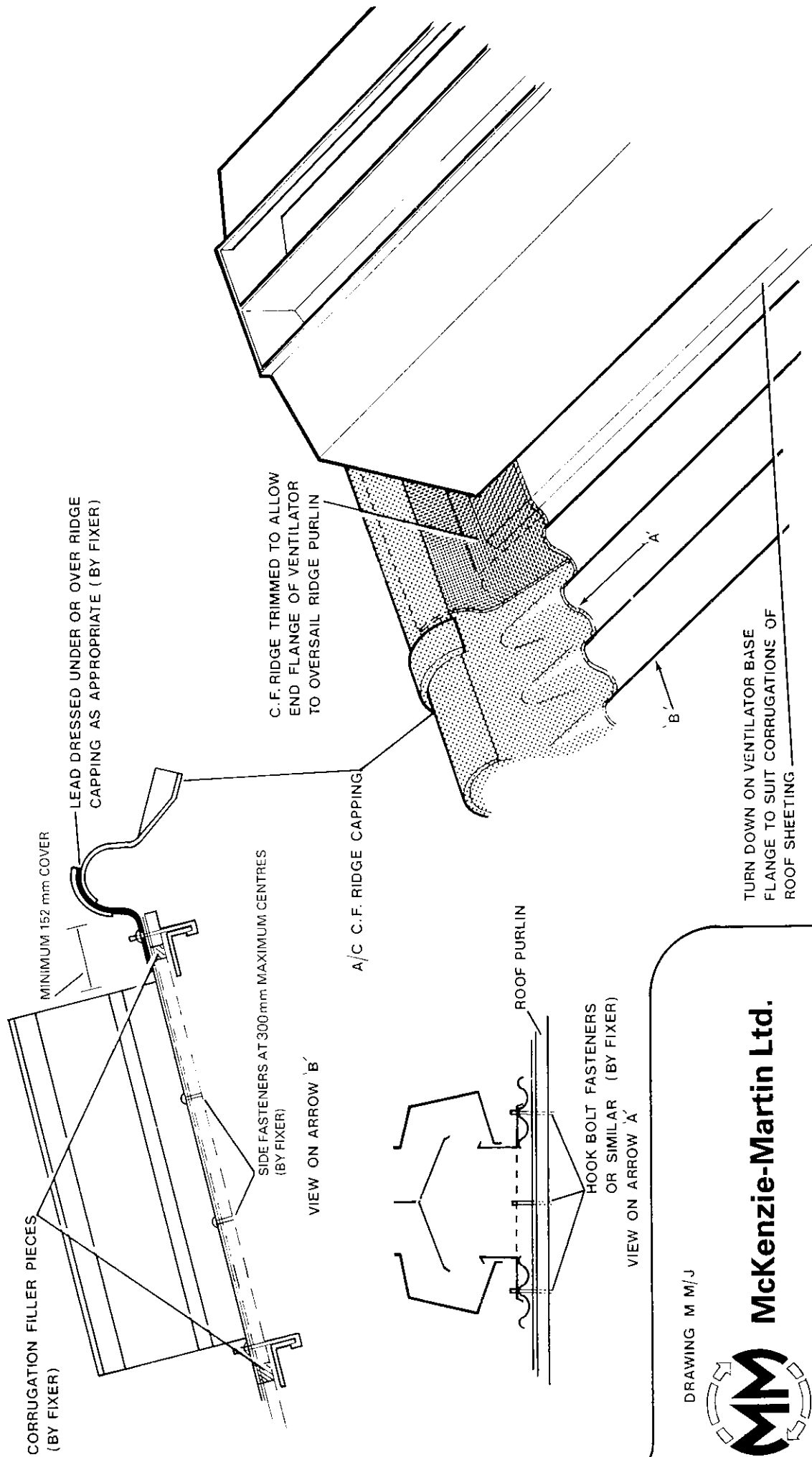
DRAWING M M/H



McKenzie-Martin Ltd.

ETON HILL WORKS, ETON HILL ROAD, RADCLIFFE
 MANCHESTER M26 9US. TEL: 0161-723 2234
 FAX: 0161-725 9531

KENSTACK - TYPICAL MOUNTING DETAIL ON ROOF SHEETING TO PLAIN WING PREFORMED RIDGE CAPPING



KENSTACK - TYPICAL MOUNTING DETAIL ON ROOF SHEETING TO A/C C.F. RIDGE

DRAWING M M/J



McKenzie-Martin Ltd.

ETON HILL WORKS, ETON HILL ROAD, RADCLIFFE
 MANCHESTER M26 9US. TEL: 0161-723 2234
 FAX: 0161-725 9531

152 mm MINIMUM LAP

CRANKED CROWN METAL CAPPING FLASHING* DRESSED
OVER VENTILATOR END FLANGE AND RIDGE (BY FIXER)

* CAN BE SUPPLIED WITH VENTILATORS IF REQUESTED.

SIDE FASTENERS AT 300 mm CENTRES
MAXIMUM (BY FIXER)

MASTIC SEALANT

CORRUGATION FILLER PIECES (BY FIXER)

VIEW ON ARROW 'B'

ROOF PURLIN

HOOKBOLT FASTENERS OR
SIMILAR (BY FIXER)

VIEW ON ARROW 'A'

'B'

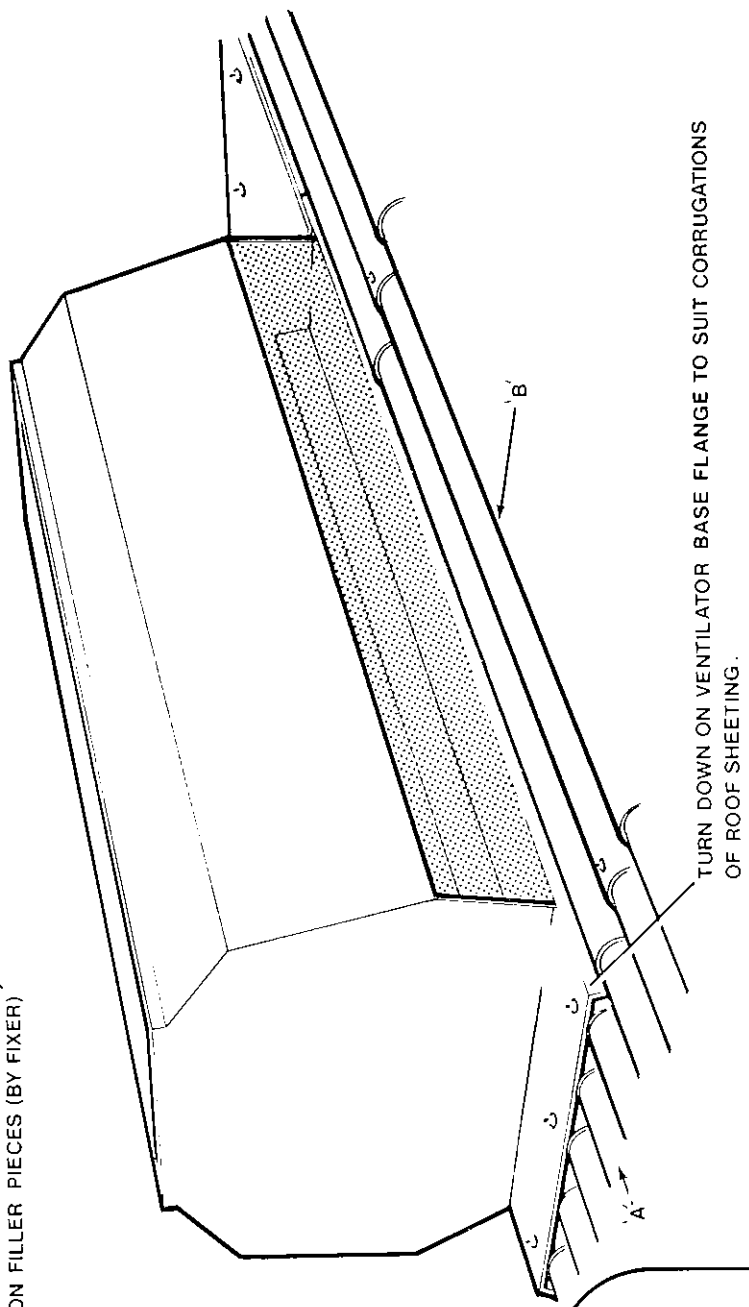
DRAWING M M/K



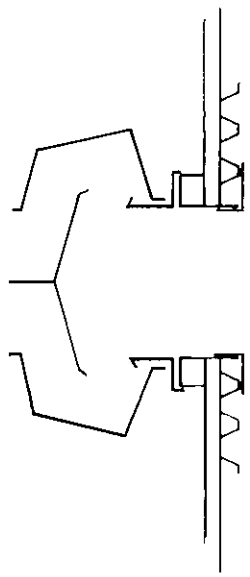
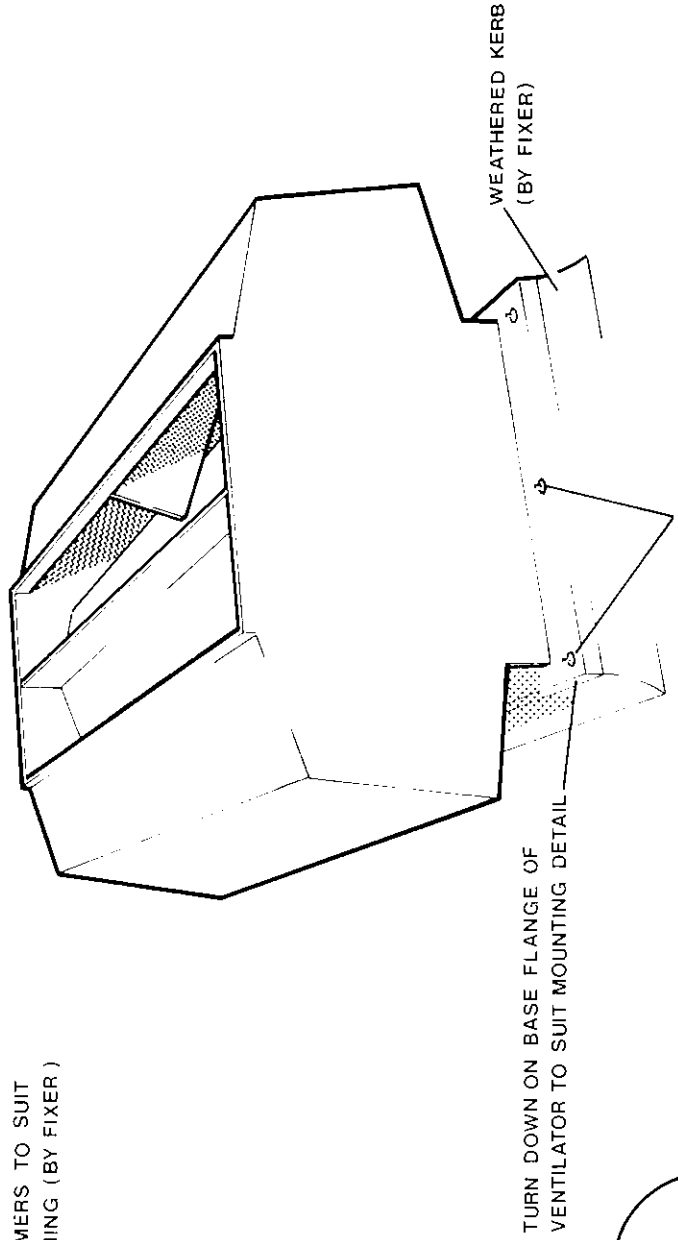
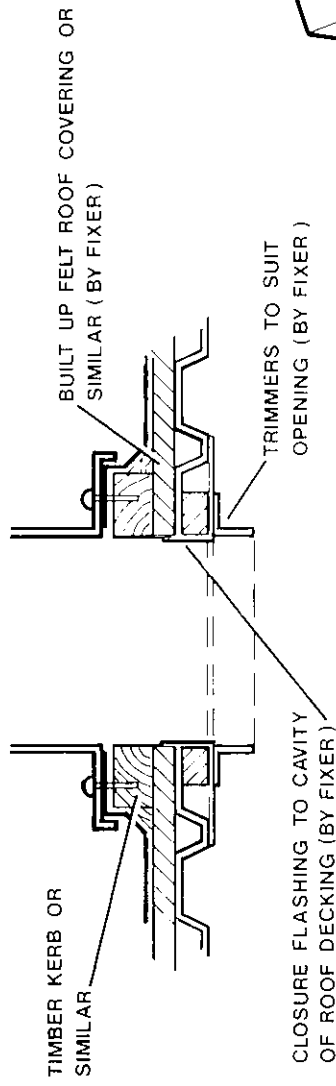
McKenzie-Martin Ltd.

ETON HILL WORKS, ETON HILL ROAD, RADCLIFFE
MANCHESTER M26 9US. TEL: 0161-723 2234

FAX: 0161-725 9531



KENSTACK— TYPICAL MOUNTING DETAIL ON SHEETING TO A/C CRANKED CROWN RIDGE SHEETING



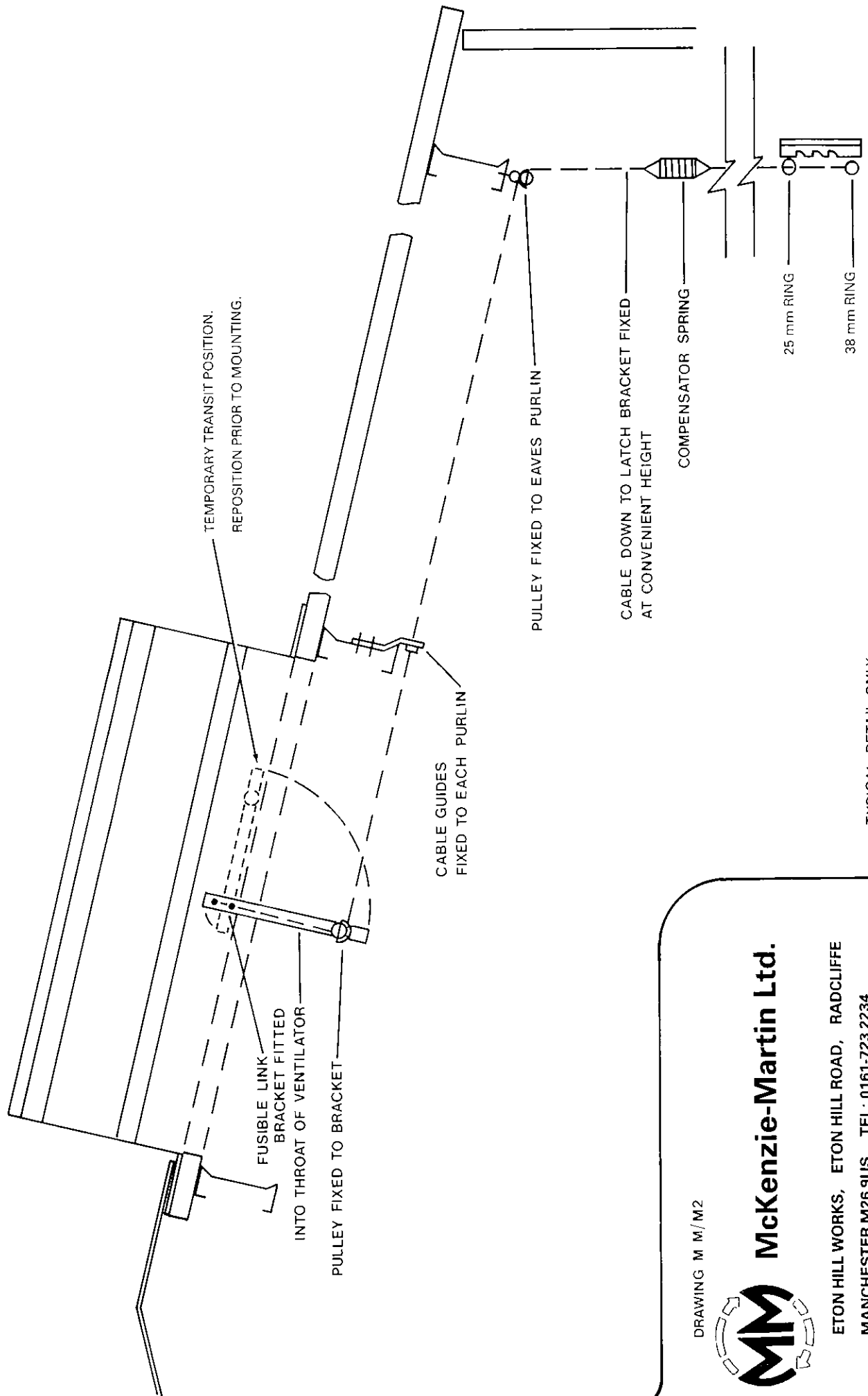
DRAWING M M/L



McKenzie-Martin Ltd.

ETON HILL WORKS, ETON HILL ROAD, RADCLIFFE
 MANCHESTER M26 9US. TEL: 0161-723 2234
 FAX: 0161-725 9531

KENSTACK - TYPICAL MOUNTING DETAIL ONTO FLAT ROOFS



TEMPORARY TRANSIT POSITION.
REPOSITION PRIOR TO MOUNTING.

FUSIBLE LINK
BRACKET FITTED
INTO THROAT OF VENTILATOR

PULLEY FIXED TO BRACKET

CABLE GUIDES
FIXED TO EACH PURLIN

PULLEY FIXED TO EAVES PURLIN

CABLE DOWN TO LATCH BRACKET FIXED
AT CONVENIENT HEIGHT

COMPENSATOR SPRING

25 mm RING

38 mm RING

DRAWING M M / M2



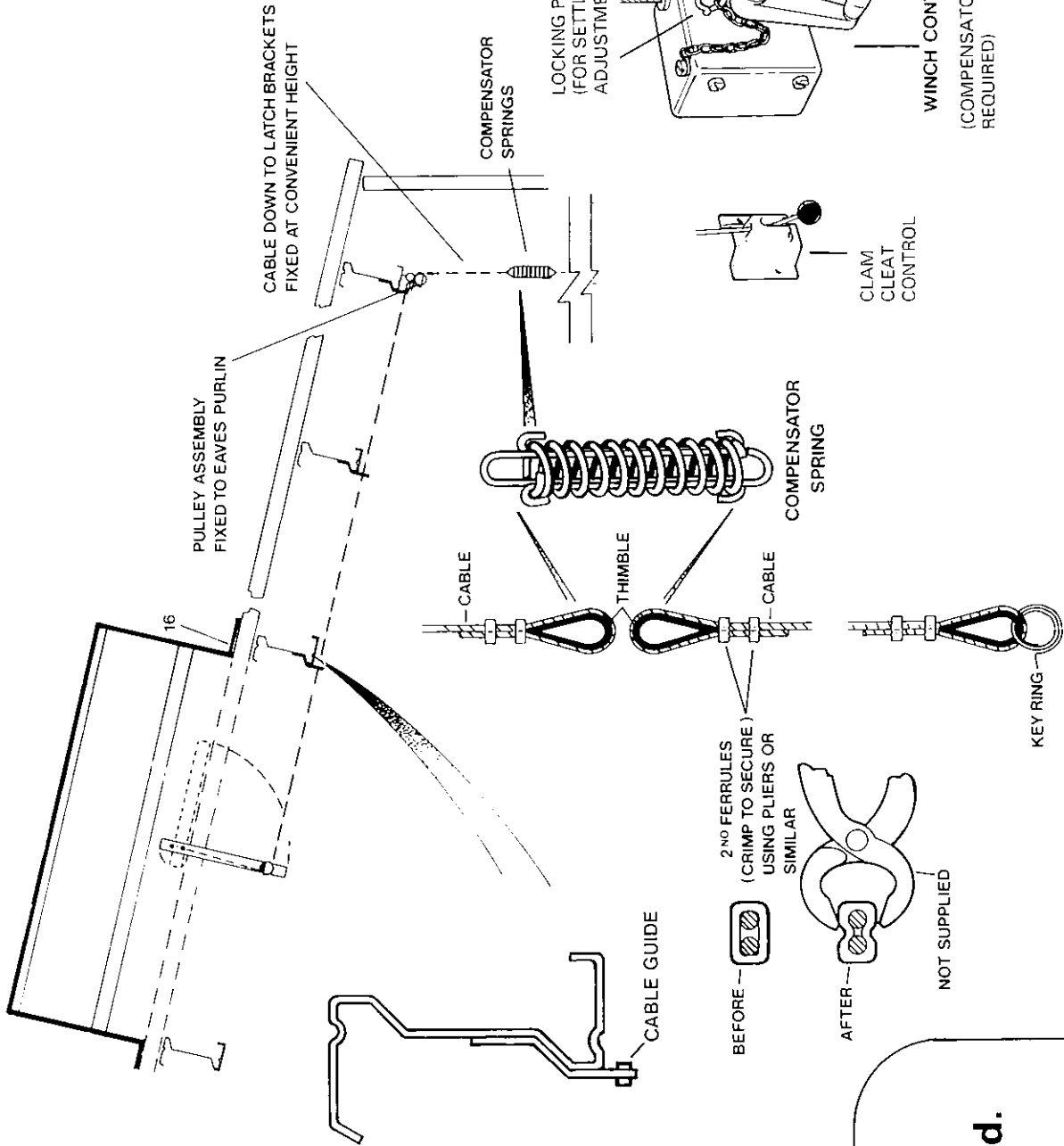
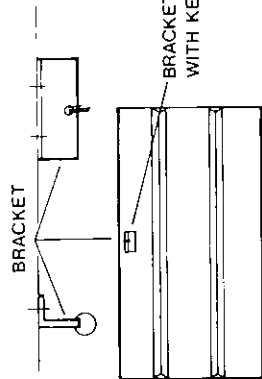
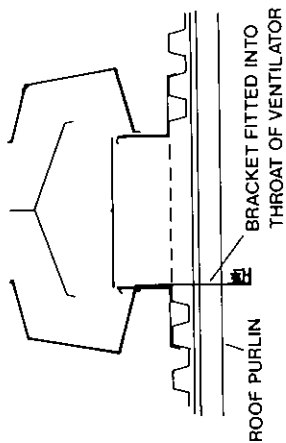
McKenzie-Martin Ltd.

ETON HILL WORKS, ETON HILL ROAD, RADCLIFFE
MANCHESTER M26 9US. TEL: 0161-723 2234

FAX: 0161-725 9531

TYPICAL DETAIL ONLY

CONTROLS TO DAMPER FOR MCKENZIE - MARTIN KENSTACK VENTILATOR (CABLE OPERATED)



TYPICAL DETAIL ONLY CONTROLS TO DAMPER FOR MCKENZIE-MARTIN KENSTACK VENTILATORS. (CABLE OPERATED)

DRAWING M M/M3



McKenzie-Martin Ltd.

ETON HILL WORKS, ETON HILL ROAD, RADCLIFFE
 MANCHESTER M26 9US. TEL: 0161-723 2234
 FAX: 0161-725 9531



Details required for manufacture

DRAWING REF: DM:FV

of CLEARFIRE, KENSTACK, MULTI-FIRE AND FIREMAC VENTILATORS

McKenzie-Martin Ltd.

ETON HILL WORKS, ETON HILL ROAD, RADCLIFFE, MANCHESTER M26 2US. TEL: 0161-723 2234 FAX: 0161-725 9531

CLIENT

CONTRACT

UNIT TYPE

TYPE & SIZE OF PURLIN (INCLUDING MANUFACTURER)

TYPE OF SHEETING (MANUFACTURER AND MATERIAL)

ROOF PITCH IN 0°

OVERALL DEPTH OF SHEETING (INCLUDING LINING)

DISTANCE FROM S.O.P. TO VERTICAL LEG OF PURLIN (X)

(This is applicable when ventilators mounted 1st purlin down from S.O.P.)

IF ROOF CAVITY CLOSURE FLASHINGS ARE REQUIRED, PLEASE CONSULT THIS OFFICE

IF UNIT IS OPERABLE PLEASE INDICATE:-

HEIGHT TO EAVES

DISTANCE DOWN SLOPE FROM MOUNTING POSITION TO EAVES

Below is a sketch illustrating a typical roof detail. If the information requested cannot be transposed using the detail below, clients are requested to sketch the relevant information overleaf.

Units manufactured for fire release only, incorporate a release and reset testing facility. As this facility may be mounted on the internal or external surface of the unit, please indicate which alternative is applicable?

