



# FIXING INSTRUCTIONS FOR CONTINUOUS FIXED LOUVRES Ref/M.M/10/82

## McKenzie-Martin Ltd.

ETON HILL WORKS, ETON HILL ROAD, RADCLIFFE, MANCHESTER M26 9US. TEL: 0161-723 2234 FAX: 0161-725 9531

### GENERAL

- a Care must be taken in storage, handling, lifting and fixing of the continuous fixed louvre panels to avoid damage, especially to the integral mullion support and louvre blades.
- b All holes made in the mullions must be drilled and not punched.

### NOTE

The purchaser is responsible for the supply of all fixing bolts, nuts and washers etc. of adequate size and quality to ensure satisfactory fixing to lateral or vertical structural support.

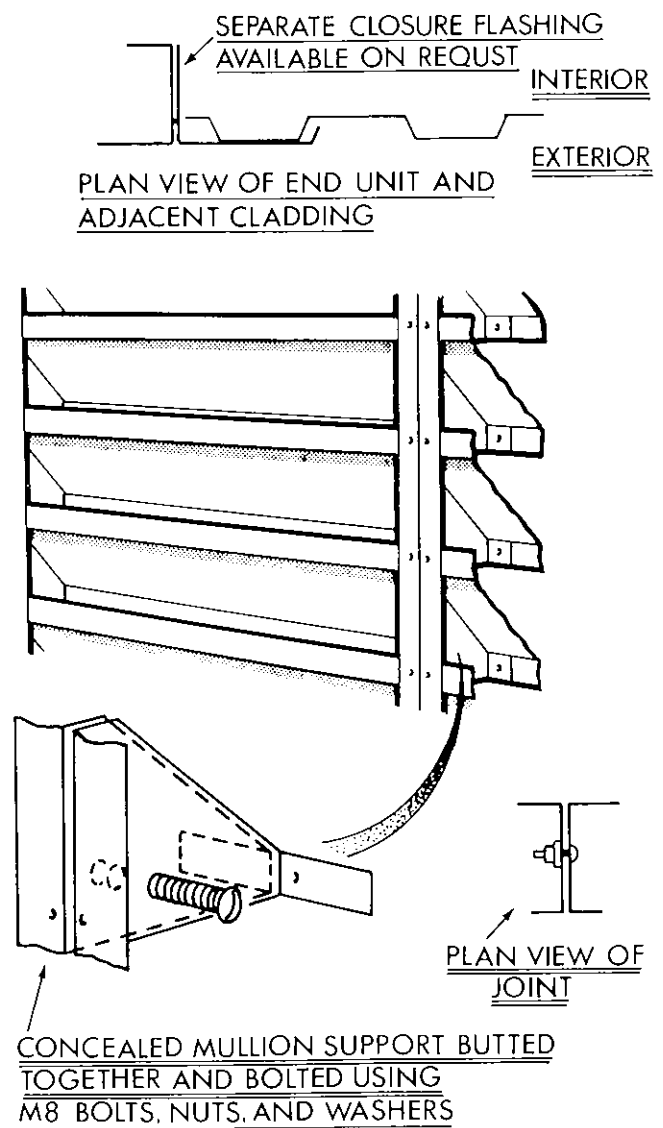
McKENZIE-MARTIN LTD. CANNOT BE HELD RESPONSIBLE FOR FAULTY INSTALLATION OR DAMAGE CAUSED THEREBY. THESE FIXING INSTRUCTIONS DO NOT FORM PART OF THE COMPANY'S CONDITIONS OF SALE.

### TYPICAL CONSTRUCTION DETAILS AND SUGGESTED METHODS OF FIXING

- 1 Into sidewall cladding with an over rail lining and spacer battens fixed between side rails and secured with angle cleats.
- 1a Into sidewall cladding with an over rail lining and spacer battens fixed to face of side rails.
- 2 Into sidewall cladding with single skin or composite insulated sidewall cladding.
- 3 Into concrete or brickwork opening.

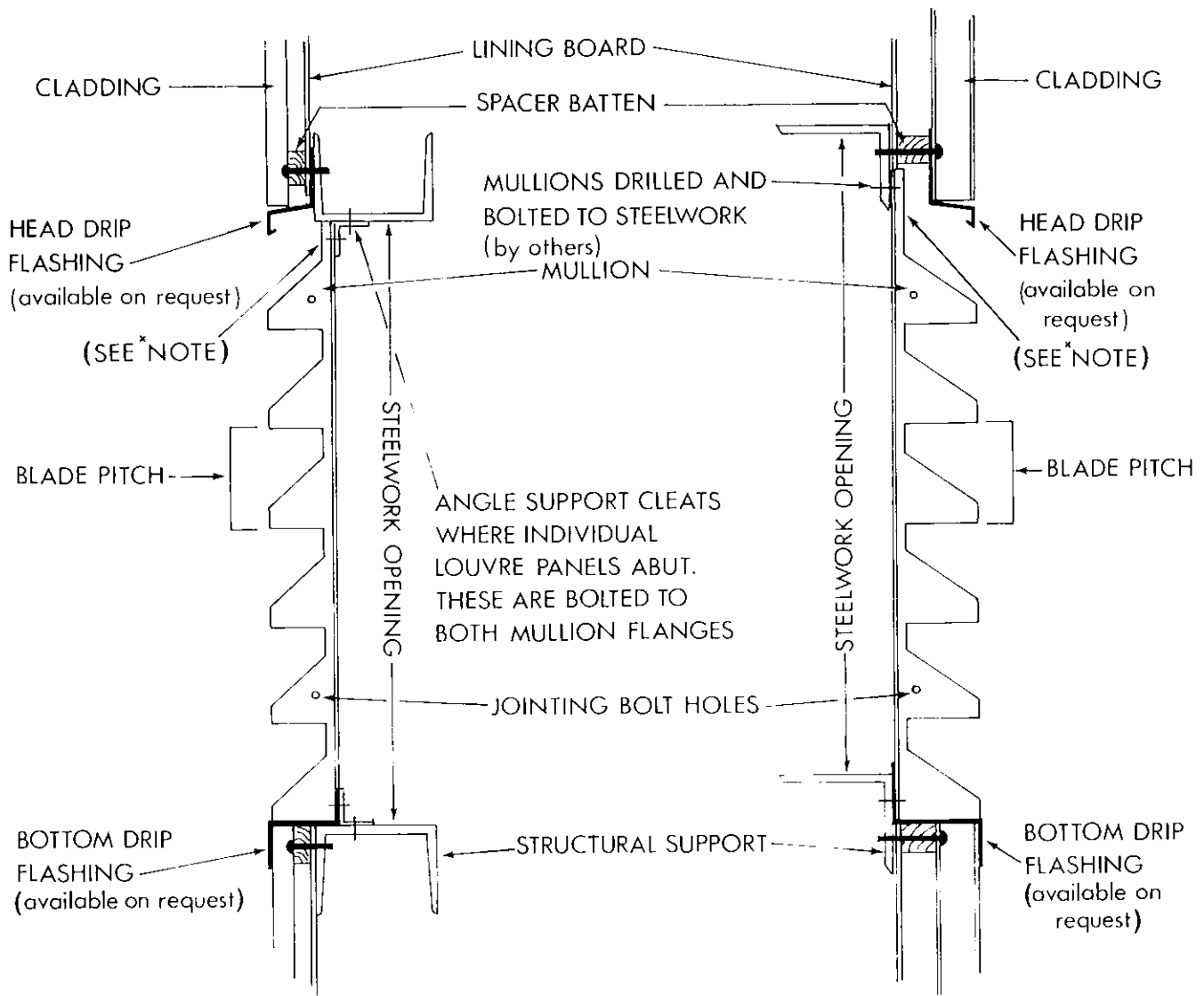
### <sup>x</sup>NOTE

Blade pitch at 127mm or 95mm as applicable Head detail adjusted to suit overall height of prepared opening.



Due to the Company's policy of manufacturing to customers specific requirements, the Company accepts no responsibility for any discrepancies which may occur between the equipment supplied and the descriptions in this publication.

Whilst the Company has made every effort to ensure that the information contained in these fixing instructions is accurate, it cannot be held responsible for any errors or omissions arising.



1 INTO SIDEWALL CLADDING WITH AN OVER RAIL LINING AND SPACER BATTENS: FIXED IN BETWEEN SIDE RAILS AND SECURED WITH ANGLE CLEATS.

1a INTO SIDEWALL CLADDING WITH AN OVER RAIL LINING AND SPACER BATTENS: FIXED DIRECTLY TO VERTICAL FACE OF SIDE RAILS.

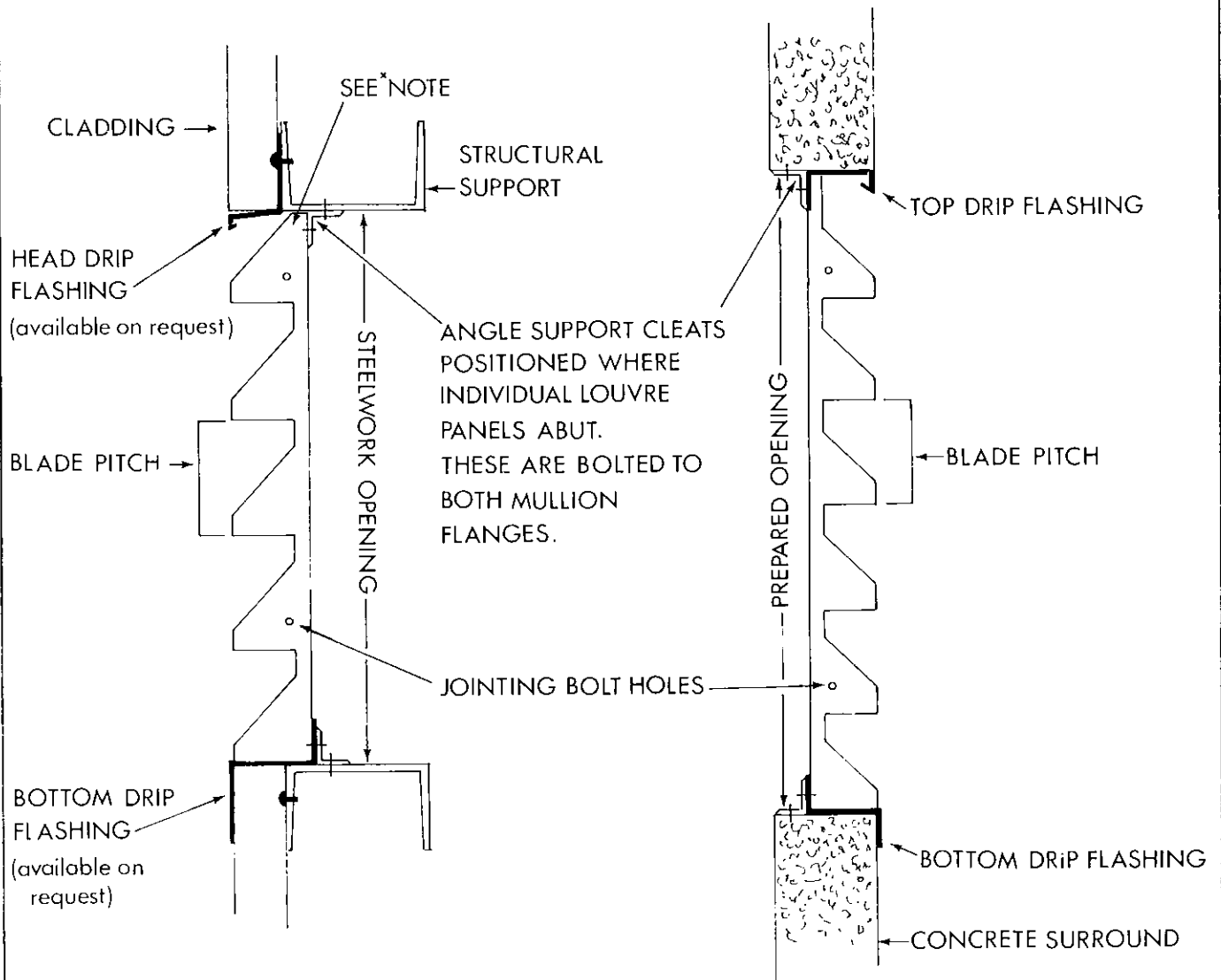


**McKenzie-Martin Ltd.**

ETON HILL WORKS, ETON HILL ROAD, RADCLIFFE

MANCHESTER M26 9US. TEL: 0161-723 2234

FAX: 0161-725 9531



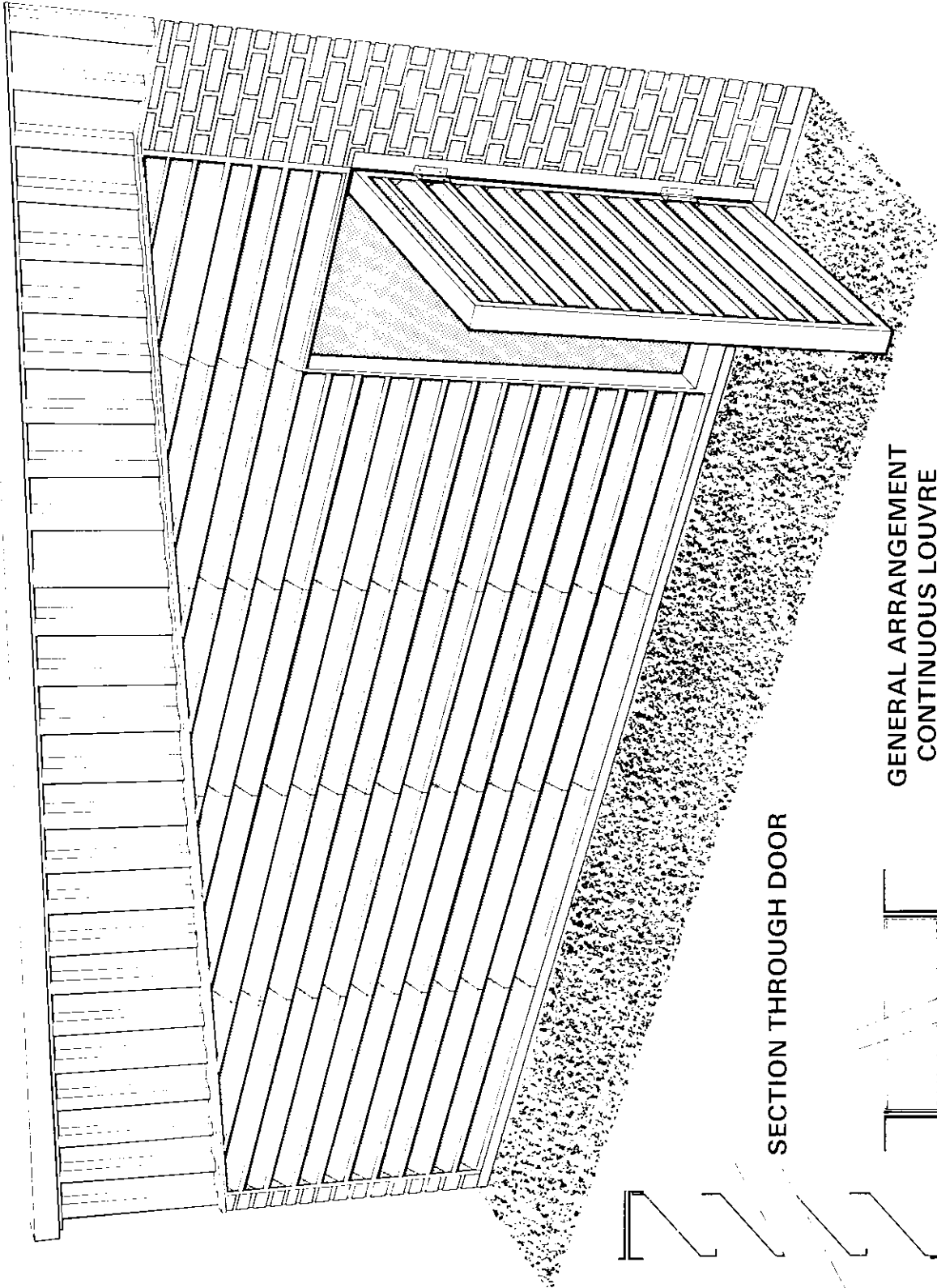
2 INTO SIDEWALL CLADDING WITH SINGLE SKIN OR COMPOSITE INSULATED SIDEWALL CLADDING

3 INTO CONCRETE OR BRICKWORK OPENING



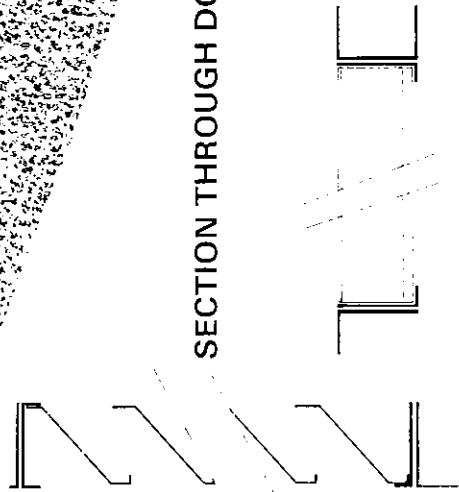
**McKenzie-Martin Ltd.**

ETON HILL WORKS, ETON HILL ROAD, RADCLIFFE  
 MANCHESTER M26 9US. TEL: 0161-723 2234  
 FAX: 0161-725 9531



GENERAL ARRANGEMENT  
CONTINUOUS LOUVRE

SECTION THROUGH DOOR



**McKenzie-Martin Ltd.**

ETON HILL WORKS, ETON HILL ROAD, RADCLIFFE

MANCHESTER M26 9US. TEL: 0161-723 2234

FAX: 0161-725 9531



# Details required for manufacture

DRAWING REF: DM/L

## of FIXED AND ADJUSTABLE LOUVRES

### McKenzie-Martin Ltd.

ETON HILL WORKS, ETON HILL ROAD, RADCLIFFE, MANCHESTER M26 2US. TEL: 0161-723 2234 FAX: 0161-725 9531

**LOUVRES INTO SIDEWALL CLADDING - Details required for manufacture.**

TYPE OF CLADDING (manufacture & material) ?  
.....

SIZE AND TYPE OF SHEETING RAIL ?  
.....

OVERALL DEPTH INC LINING ?  
.....

IF HEAD CILL FLASHING IS REQUIRED  
PLEASE CONSULT THIS OFFICE \*(SEE OVERLEAF)

RAIL CENTRES ? .....  
.....

ACTUAL BOX HEIGHT IS  
CALCULATED FROM RAIL CENTRES  
UNLESS OTHERWISE INDICATED ?  
.....

BOX WIDTH TO YOUR REQUIREMENT ?  
.....

HEIGHT FROM FLOOR LEVEL ?  
.....

**LOUVRES INTO BRICK or CONCRETE WALLS - Details required for manufacture.**

LINTOL

ACTUAL OPENING HEIGHT & WIDTH TO ACCEPT LOUVRE VENTILATOR ?  
.....

IF SOFTWOOD TRIMMERS ARE USED THEN  
PLEASE GIVE DETAILS OF ANY SPECIAL  
TOLERANCES REQUIRED ?  
.....

HEIGHT FROM FLOOR LEVEL ?  
.....

OVERALL WIDTH ? .....  
.....

**LOUVRES INTO GLAZING - Details required for manufacture.**

TYPE OF CLADDING (manufacture & material)  
AND OVERALL DEPTH ?  
(if applicable) .....  
.....

OVERSAIL OF CLADDING  
OVER GLAZING BAR ?  
.....

HEIGHT/LENGTH OF GLAZING BAR  
AND/OR GLASS LENGTH ?  
(as applicable) .....  
.....

CENTRES OF GLAZING BARS AND  
GLASS WIDTH ? .....  
.....

SIZE AND TYPE  
OF GLAZING BAR ?  
.....  
.....

GLAZING RAIL CENTRES AND/OR  
CLEARANCE BETWEEN PURLINS  
(as applicable) ? .....  
.....

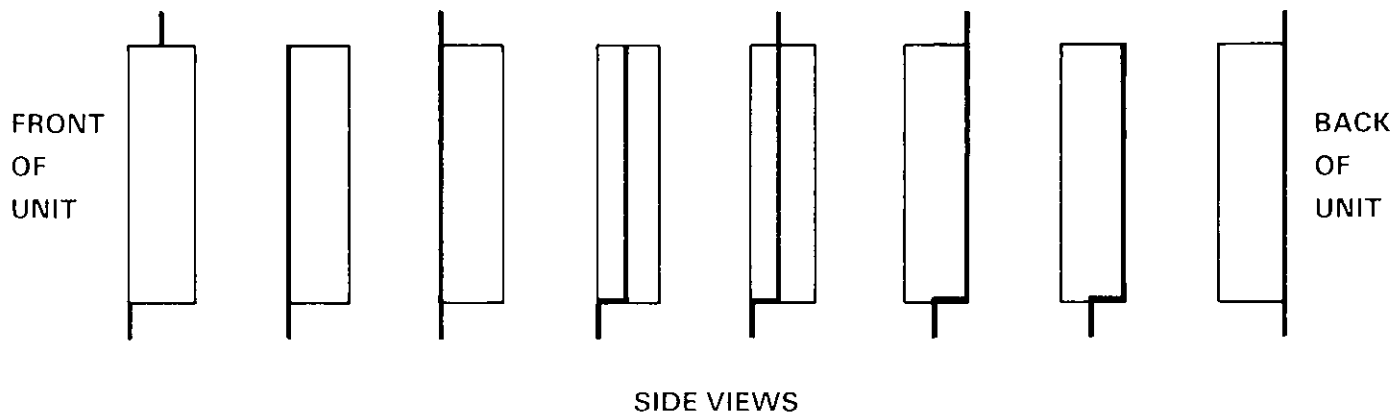
HEIGHT FROM FLOOR LEVEL ?  
.....  
.....

Please complete the following if applicable:-

*(It may be useful to refer to our recommended fixing instructions for guidance)*

- (1) If flanges are required, is the box depth of the louvre to be located internally or externally in relation to the building line i.e. are the louvre flanges to be located to the front, intermediate or rear of box depth? Below are some typical alternatives which may be of assistance.

### TYPICAL FLANGE DETAILS



- (2) If you have any alternative or special flange requirements, please sketch your details overleaf.
- (3) If the unit incorporates either Bird Guards, Security Mesh or Fly Mesh are they to be fitted internally or externally?

### CONTROL DETAILS

- (4) If fusible links are fitted to operating louvres, are they to be set to open or close the units when activated in the event of a fire?